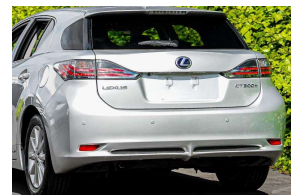
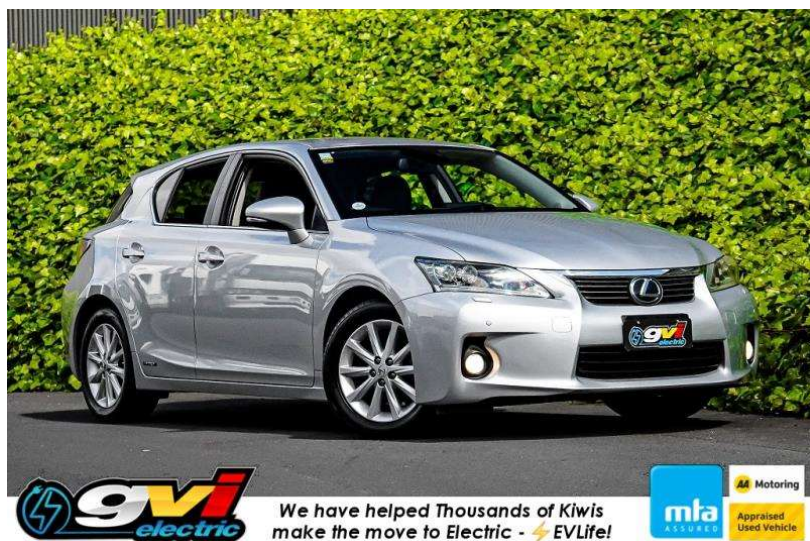


2013 Lexus CT 200h Hybrid / Leather / Cruise



We have helped Thousands of Kiwis make the move to Electric - EVLife!



VEHICLE INFORMATION

Cash Price

Includes GST

\$18,380

+ on-road-costs

Finance this vehicle from only

\$88.57

per week*



Gain peace of mind with Mechanical Breakdown Insurance. Ask us how.

Body
5 door, Hatchback

Odometer
94,460 km

Engine
1800 cc

Fuel Type
Hybrid

Transmission
Automatic

Fuel Saver Rating
3.5 out of 6 stars

VIN
-

Reg No.
-

Ext Colour
Silver

History
-

Seats
5 seats

Interior
-

Audio
-

Stock ID
58694

Features / Comments

- High Spec Lexus CT200h in Bright Silver. Luxury Hybrid Hatchback with Premium Black Leather Seats Economy and Performance with Dual Petrol / Electric Motors -

2013 Lexus CT200H Hybrid
1800cc Petrol Electric Hybrid Automatic

Sports Plus Luxury Check out the options

- Front and Side Airbag Protection
- Full Black Leather Seats
- F Sport Style Blue Seat Stitching Detail
- Steering Wheel Audio Controls
- Front and Rear Parking Sensors



Tauranga, Phone 0800 575 672, Email hayden@gvi.kiwi
Corner of Hewletts Rd and Waimarie St, Mount Maunganui, Tauranga, 3118

*Finance calculation based on a 48 month term, 25.00% deposit and a and with an example annual fixed interest rate of 12.25%. Actual interest rate may be higher or lower. Includes an establishment fee of \$419 and a monthly maintenance fee of \$8.00. Full term amount payable of \$23,017 (\$18,422 finance + \$4,595 deposit). Estimate only, not an offer of finance. Terms, conditions and lending criteria apply.