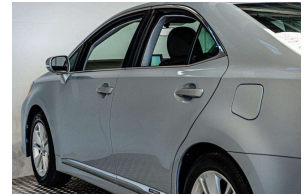


2009 Lexus HS250h Hybrid / Cruise / Rev



VEHICLE INFORMATION

Cash Price

Includes GST

\$14,480

+ on-road-costs

Body
4 door, Sedan

Reg No.
-

Odometer
80,940 km

Ext Colour
Blue

Engine
2400 cc

History
-

Fuel Type
Hybrid

Seats
5 seats

Transmission
Auto

Interior
-

Fuel Saver Rating
-

Audio
-

VIN
-

Stock ID
52065

Finance this vehicle
from only

\$68.97

per week*



Gain peace of mind
with Mechanical
Breakdown
Insurance. Ask us
how.

Features / Comments

Take advantage of the Clean Car Discount and get a cash rebate of \$646 after purchase

- High Grade Lexus Hybrid Sedan with super economical dual Hybrid Petrol / Electric motors, Black Interior, Cruise Control, Front and Side Airbags and much much more -

2009 Lexus HS 250h Hybrid Sedan
2400cc Petrol / Electric Automatic

Very good looking late model Hybrid sedan loaded with luxury:

- Front and Side Airbag Protection
- ESC Electronic Stability Control
- Steering Wheel Multifunctional Controls



Auckland, Phone 0800 443 684, Email daniel@gvi.kiwi
575 Great South Road, Penrose, Auckland

*Finance calculation based on a 48 month term, 25.00% deposit and a and with an example annual fixed interest rate of 10.88%. Actual interest rate may be higher or lower. Includes an establishment fee of \$419 and a monthly maintenance fee of \$8.00. Full term amount payable of \$17,965 (\$14,345 finance + \$3,620 deposit). Estimate only, not an offer of finance. Terms, conditions and lending criteria apply.