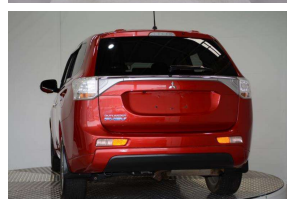
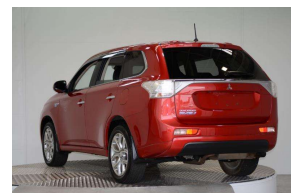


# 2014 Mitsubishi Outlander PHEV 4WD 33kms!



## VEHICLE INFORMATION

### Cash Price

Includes GST

# \$34,450

+ on-road-costs

Finance this vehicle from only

# \$167.27

per week\*



Gain peace of mind with Mechanical Breakdown Insurance. Ask us how.

Body  
5 door, 4WD

Odometer  
32,805 km

Engine  
2000 cc

Fuel Type  
Hybrid

Transmission  
Auto

Fuel Saver Rating  
-

VIN  
-

Reg No.  
-

Ext Colour  
Wine

History  
-

Seats  
5 seats

Interior  
-

Audio  
-

Stock ID  
44588

## Features / Comments

- Wanting to go electric but need SUV space, need to tow, need 4WD? The Outlander PHEV is the Perfect Kiwi 4WD EV The Petrol engine charges the battery on the go and with A/C and D/C Charge capability charging on the go is never a problem -

2014 Mitsubishi Outlander PHEV 4WD  
2000cc Hybrid Petrol / Electric Dual Motor 4x4  
Plug in Charge for 100% Fully Electric EV Zero Emission Driving

- 36 Month Battery / Mechanical Warranty Available -

High spec PHEV Hybrid SUV loaded with:  
Front and Side Airbag Protection  
ESP Electronic Stability Control



Auckland, Phone 0800 443 684, Email [daniel@gvi.kiwi](mailto:daniel@gvi.kiwi)  
575 Great South Road, Penrose, Auckland

\*Finance calculation based on a 48 month term, 25.00% deposit and a and with an example annual fixed interest rate of 13.95%. Actual interest rate may be higher or lower. Includes an establishment fee of \$419 and a monthly maintenance fee of \$8.00. Full term amount payable of \$43,405 (\$34,792 finance + \$8,613 deposit). Estimate only, not an offer of finance. Terms, conditions and lending criteria apply.