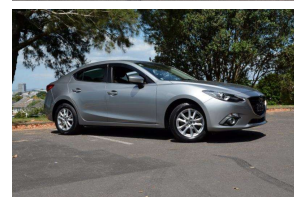
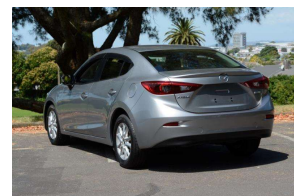


# 2013 Mazda Axela Hybrid \* Petrol / Electric \*



## VEHICLE INFORMATION

### Cash Price

Includes GST

# \$18,250

+ on-road-costs

**Body**  
4 door, Sedan

**Odometer**  
98,500 km

**Engine**  
2000 cc

**Fuel Type**  
Hybrid

**Transmission**  
Auto

**Fuel Saver Rating**  
5.5 out of 6 stars

**VIN**  
-

**Reg No.**  
-

**Ext Colour**  
Grey

**History**  
-

**Seats**  
5 seats

**Interior**  
-

**Audio**  
-

**Stock ID**  
43840

Finance this vehicle  
from only

# \$90.72

per week\*



Gain peace of mind  
with Mechanical  
Breakdown  
Insurance. Ask us  
how.

## Features / Comments

\*\* WOW Check out the options list on the stunning Eco friendly and Super Economical Hybrid Sedan With full EV Mode for around town running and the extra power of hybrid petrol / electric for the open road this is fun but considerate motoring \*\*

2013 Mazda Axela Hybrid S Sedan  
2000cc Hybrid Perol Electric Motors  
\*\* Running Toyota Prius Hybrid System \*\*

Very High Spec Hybrid Sports Sedan  
\* Skyactiv Technology Engines  
\* Front and Side Airbag Protection  
\* ESP Stability Control  
\* Factory Alloy Wheels



Wellington, Phone 0800 525 5885, Email [daniel@gvi.kiwi](mailto:daniel@gvi.kiwi)  
3/419 Hutt Road, Alicetown, Lower Hutt, Wellington

\*Finance calculation based on a 48 month term, 25.00% deposit and a and with an example annual fixed interest rate of 13.95%. Actual interest rate may be higher or lower. Includes an establishment fee of \$419 and a monthly maintenance fee of \$8.00. Full term amount payable of \$23,433 (\$18,870 finance + \$4,563 deposit). Estimate only, not an offer of finance. Terms, conditions and lending criteria apply.