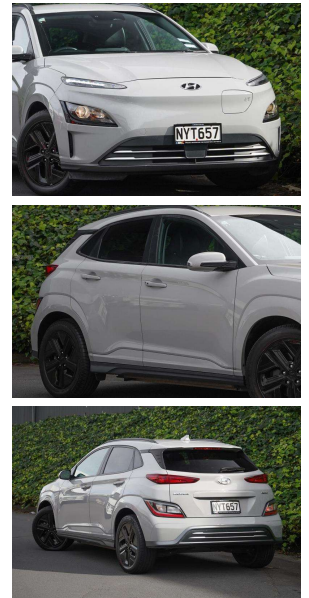
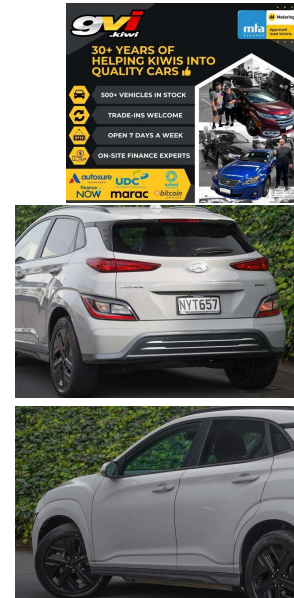


# 2021 Hyundai Kona EV 64kWh 96% SOH /



## VEHICLE INFORMATION

### Cash Price

Includes GST

# \$33,880

+ on-road-costs

Body  
5 door, SUV

Odometer  
66,846 km

Engine

-

Fuel Type  
Electric

Transmission  
Automatic

Fuel Saver Rating  
6 out of 6 stars

VIN

-

Reg No.

NYT657

Ext Colour  
Black

History

-

Seats  
5 seats

Interior

-

Audio

-

Stock ID

61968

Finance this vehicle  
from only

# \$159.54

per week\*



Gain peace of mind  
with Mechanical  
Breakdown  
Insurance. Ask us  
how.

## Features / Comments

Ready to make the move to an Electric Vehicle but wanting something different from the Nissan Leaf and Tesla Model 3? Looking for massive range without a massive price tag? Here you go

The Kona Electric with huge 64kWh Battery is a range monster delivering about 450kms per charge\*

Its crossover SUV format gives increased ground clearance and an easy entry / exit without having to climb up / out of the vehicle

2021 Hyundai Kona EV 64KWH 150KW/EV/FD Gen II  
150kW Electric Drive Motor Automatic

Battery and Range Expectations:  
64kWh Battery delivering approx 450kms per charge\*



Auckland, Phone 0800 443 684, Email [daniel@gvi.kiwi](mailto:daniel@gvi.kiwi)  
575 Great South Road, Penrose, Auckland

\*Finance calculation based on a 48 month term, 25.00% deposit and a and with an example annual fixed interest rate of 12.25%. Actual interest rate may be higher or lower. Includes an establishment fee of \$419 and a monthly maintenance fee of \$8.00. Full term amount payable of \$41,655 (\$33,185 finance + \$8,470 deposit). Estimate only, not an offer of finance. Terms, conditions and lending criteria apply.