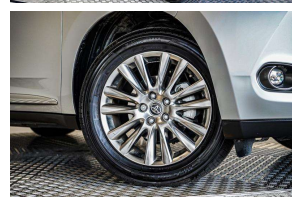
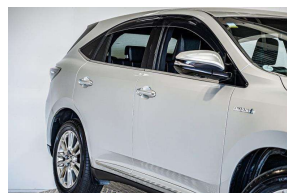


# 2014 Toyota Harrier Hybrid Premium 4WD /



## VEHICLE INFORMATION

### Cash Price

Includes GST

**\$28,380**

+ on-road-costs

Finance this vehicle  
from only

**\$134.36**

per week\*



Gain peace of mind  
with Mechanical  
Breakdown  
Insurance. Ask us  
how.

### Body

5 door, 4WD

### Odometer

100,927 km

### Engine

2500 cc

### Fuel Type

Hybrid

### Transmission

Auto

### Fuel Saver Rating

-

### VIN

-

### Reg No.

-

### Ext Colour

Silver

### History

-

### Seats

5 seats

### Interior

-

### Audio

-

### Stock ID

57220

## Features / Comments

- Lexus Spec Premium Harrier with more options than the Harrier Elegance. The perfect kiwi hybrid 4x4, the Toyota Harrier Hybrid 2.5L Engine combined with Hybrid Electric Motor Technology, 4WD and Full of Luxury Options This is a Perfect Combination for a Kiwi SUV -

2014 Toyota Harrier Premium e-Four Hybrid 4WD  
2500cc Petrol Electric Hybrid Automatic Tiptronic 4x4

- Includes our 12 Month Hybrid Battery Warranty -

Amazing economy with the electric engine this is a great vehicle for around town and on the open road Looking at a Highlander Hybrid, then look at this

High Spec Toyota Hybrid SUV with



Tauranga, Phone 0800 575 672, Email [hayden@gvi.kiwi](mailto:hayden@gvi.kiwi)

Corner of Hewletts Rd and Waimarie St, Mount Maunganui, Tauranga, 3118

\*Finance calculation based on a 48 month term, 25.00% deposit and a and with an example annual fixed interest rate of 12.25%. Actual interest rate may be higher or lower. Includes an establishment fee of \$419 and a monthly maintenance fee of \$8.00. Full term amount payable of \$35,041 (\$27,946 finance + \$7,095 deposit) Estimate only, not an offer of finance. Terms, conditions and lending criteria apply.