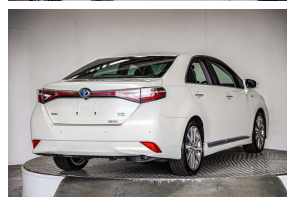
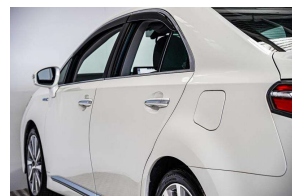


2013 Toyota Sai Hybrid / HS250h New Shape /



VEHICLE INFORMATION

Cash Price

Includes GST

\$14,980

+ on-road-costs

Finance this vehicle
from only

\$73.00

per week*



Gain peace of mind
with Mechanical
Breakdown
Insurance. Ask us
how.

Body

4 door, Sedan

Odometer

107,482 km

Engine

2400 cc

Fuel Type

Hybrid

Transmission

Auto

Fuel Saver Rating

3.5 out of 6 stars

VIN

-

Reg No.

-

Ext Colour

White

History

-

Seats

5 seats

Interior

-

Audio

-

Stock ID

56047

Features / Comments

High Grade Sai Toyota Hybrid Sedan with super economical dual Hybrid Petrol / Electric motors

2013 Toyota Sai Hybrid Sedan G A Package

2400cc Petrol / Electric Automatic

Lexus HS250H with a Toyota Badge

Very good looking late model sedan loaded with:

- Front and Side Airbag Protection
- ESP Electronic Stability Control
- Premium Black Cloth Seats
- Electric Front Seats
- Diamond Cut Factory Alloy Wheels



Auckland, Phone 0800 443 684, Email daniel@gvi.kiwi
575 Great South Road, Penrose, Auckland

*Finance calculation based on a 48 month term, 25.00% deposit and a and with an example annual fixed interest rate of 12.25%. Actual interest rate may be higher or lower. Includes an establishment fee of \$419 and a monthly maintenance fee of \$8.00. Full term amount payable of \$18,929 (\$15,184 finance + \$3,745 deposit). Estimate only, not an offer of finance. Terms, conditions and lending criteria apply.